



# snorkel

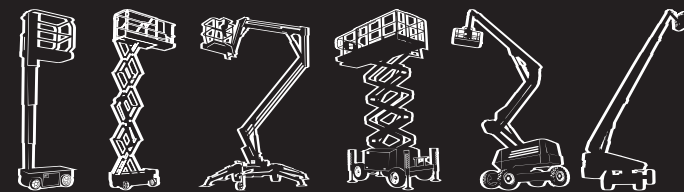


PO Box 1160, St. Joseph  
MO 64502, U.S.A.  
T +1-785-989-3000  
T +1-800-255-0317 (toll-free)  
F +1-785-989-3070

[www.snorkellifts.com](http://www.snorkellifts.com)

Specifications subject to change without notice. Photos and diagrams within this brochure are for promotional purposes only. Refer to appropriate Snorkel operators manual for detailed instructions on the proper use and maintenance.

## PRODUCT RANGE OVERVIEW





**Snorkel is a leading global manufacturer of aerial work platforms. Our comprehensive range of aerial lifts provides safe and efficient working at height, from 12 feet to 125 feet. We have the right machine for any application, from interior building maintenance through to the toughest construction job site.**

Tracing its roots back to 1946 in California, Snorkel has a proud heritage of finding practical solutions to safely working at height. Our success is built on staying true to our core values, which influence everything we do. Above all, we believe in maintaining 100% focus on our customers.

We invented the first self-propelled scissor lift more than three decades ago and that spirit of innovation continues today. Snorkel is constantly finding new solutions to working at height and new ways to enhance the safety and productivity benefits enjoyed by our customers the world over.

Snorkel's philosophy is "keep it simple" – we manufacture robust, reliable machines that take you to wherever you need to be, in the most efficient and safe manner possible. We build aerial lifts that meet your needs without complicating your working

life; Snorkel lifts are simple to use, simple to maintain and simple to repair - meaning low total ownership costs.

We work hard to stay closer to our customers - the Snorkel team is augmented by a vast network of distributors and over 30 direct sales people. Wherever you are, Snorkel can provide responsive, expert advice in your language, plus fast access to spare parts and product support.

Snorkel Global Finance offers a range of attractive options to enable you to purchase Snorkel machines, in a manner tailored to suit your individual business needs.

Find out more about our products and services at **[www.snorkellifts.com](http://www.snorkellifts.com)**



**PAM21/PAM26**

The PAM Series are affordable, efficient push-around mast lifts that are easy to use and easy to maintain. Compact and lightweight, the PAM Series can be easily pushed into position – and fit through a standard doorway without the need for tilting.



**UL25/UL32/UL40**

The robust and compact UL Series push-around mast lifts easily pass through a standard doorway and offer a small outrigger footprint. Our patented Girder Lock mast delivers safe and stable working heights of up to 46 ft. Non-marking castors and an easy-loader system for easy transport come as standard.



**SPM20**

The SPM20 is perfect for working in tight spaces, with skid steer and zero inside turning circle. Weighing just 1,800 lbs, the SPM20 delivers a platform height of 20 ft and can lift 330 lbs. The machine has a top speed of 2.4 mph and fully elevates in just 27 seconds.

PERSONNEL LIFTS

Designed for contractors and facilities maintenance professionals, Snorkel Personnel Lifts are lightweight, affordable, portable work platforms for interior use. Snorkel's patented Girder Lock mast design, utilised in the UL Series, delivers superb stability and reach, coupled with excellent lift capacity.

Snorkel PAM and UL Series Personnel lifts are engineered for easy use by one person. Simple to transport, they can be smoothly pushed into position and pass easily through a standard doorway. Erected in minutes, they are a fast and efficient alternative to scaffold towers, for working at heights of up to 46 ft.

Where the convenience of a self-propelled machine is preferred, the SPM20 offers a highly maneuverable, easy to drive lift with a working height of over 25 ft.

|                     | PAM21      | PAM26      | UL25        | UL32       | UL40      | SPM20      |
|---------------------|------------|------------|-------------|------------|-----------|------------|
| max. working height | 27 ft 3 in | 32 ft 2 in | 30 ft 11 in | 37 ft 9 in | 46 ft     | 25 ft 8 in |
| platform capacity   | 275 lbs    | 275 lbs    | 350 lbs     | 300 lbs    | 300 lbs   | 330 lbs    |
| stowed height       | 6 ft 6 in  | 6 ft 6 in  | 6 ft 6 in   | 8 ft 3 in  | 9 ft 6 in | 6 ft 5 in  |
| overall length      | 3 ft 11 in | 3 ft 11 in | 4 ft 1 in   | 4 ft 4 in  | 4 ft 4 in | 4 ft 5 in  |
| overall width       | 27 in      | 27 in      | 29 in       | 29 in      | 29 in     | 31 in      |
| weight (AC)         | 683 lbs    | 750 lbs    | 769 lbs     | 919 lbs    | 990 lbs   | n/a        |
| weight (DC)         | 805 lbs    | 860 lbs    | 809 lbs     | 959 lbs    | 1,030 lbs | 1,873 lbs  |





**TM12**  
The original self-propelled telescopic mast lift remains popular the world over for its versatility, strength and durability. The Snorkel TM12 can be driven through standard doorways and carried in passenger elevators - yet will still safely lift two people with tools to a platform height of 12 ft. It is ideal for a wide range of applications, from construction and maintenance to stock picking.



**S1930E/S1932E**  
The Snorkel S1930E delivers a platform height of up to 19 ft and can lift up to 500 lbs. Compact and nimble, the S1930E has an inside turning radius of just 5 in and can climb slopes of 25%. The S1930E is just 30 in wide, so can easily pass through a regular doorway. Standard features include a 3 ft deck extension for additional reach, plus mechanical pothole protection. For restricted floor loadings capacities, the S1932E is just 2 in wider than the S1930E, but 180 lbs lighter.



**S2632E/S2646E/S3246E**  
Designed for indoor construction and maintenance tasks, the S-E series electric scissors offer platform heights up to 32 ft. The 26 ft platform height model is available in 32 in wide version for confined spaces and a 46 in wide version when more working area is required.

S-E SERIES ELECTRIC SCISSOR LIFTS

Snorkel scissor lifts have tight turning circles for working in confined spaces, while roll-out deck extensions provide additional reach. Snorkel's smooth, proportional operating system gives you precise control where you need it most - and deep cycle batteries ensure your Snorkel electric lift keeps working as long as you do. Maintenance and servicing is simple and affordable thanks to commonality of parts across the S-E range.

We originated the telescopic mast lift with the TM12, which remains an industry leader today. And for job sites where pricing is the critical issue, Snorkel's SL20E sigma lift offers the most cost-effective self-propelled 19 ft lift in the world.

|                     | TM12      | S1930E    | S1932E    | S2632E    | S2646E    | S3246E    | SL20E     |
|---------------------|-----------|-----------|-----------|-----------|-----------|-----------|-----------|
| max. working height | 18 ft     | 25 ft     | 25 ft     | 32 ft     | 32 ft     | 38 ft     | 26 ft     |
| platform capacity   | 500 lbs   | 500 lbs   | 500 lbs   | 500 lbs   | 1,000 lbs | 700 lbs   | 650 lbs   |
| stowed height       | 64.7 in   | 6 ft 7 in | 6 ft 7 in | 92 in     | 92 in     | 96 in     | 6 ft 4 in |
| overall length      | 53.5 in   | 6 ft 2 in | 6 ft 2 in | 93 in     | 96 in     | 96 in     | 8 ft 4 in |
| overall width       | 30 in     | 30 in     | 32 in     | 32 in     | 46 in     | 46 in     | 30 in     |
| weight              | 1,710 lbs | 3,160 lbs | 2,980 lbs | 4,900 lbs | 5,200 lbs | 6,620 lbs | 2,645 lbs |

TM12  
S1930E  
S1932E  
S2632E  
S2646E  
S3246E  
SL20E

ELECTRIC SCISSOR LIFTS



#### SL20E

This battery-powered sigma lift delivers a great return on investment. Designed to be cost-competitive in the 19 ft scissor lift sector, the SL20E is an affordable and versatile machine, with a spacious platform, excellent lift capacity and is extremely simple to maintain – ideal for demanding rental applications.

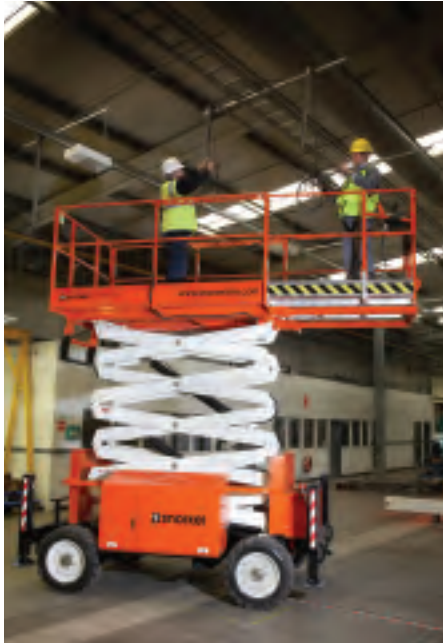
TM12  
S1930E  
S1932E  
S2632E  
S2646E  
S3246E  
SL20E

ELECTRIC SCISSOR LIFTS



**S2770RT/S3370RT**

Lightweight and compact, the S2770RT/S3370RT are ideal for outdoor work in confined spaces between buildings. With excellent ground clearance and an articulating axle they can tackle rough terrain with ease, and come with a 4 ft roll-out deck extension as standard.



**S2770BE/S3370BE**

Suitable for exterior and interior work, this bi-energy version of the S2770RT/S3370RT delivers superb job site versatility. Work outdoors on the diesel engine, then switch to battery power for indoor tasks. Non-marking, high grip tires suit all surfaces.



**S3290RT/S4390RT/S5290RT**

Engineered for maximum perform on construction sites, this rough terrain scissor family provides platform heights up to 52 ft and can climb gradients of up to 50%. The spacious 6 ft x 21 ft deck can lift up to 1,500 lbs. Standard features include twin deck extensions, powerful 4 wheel drive and oscillating axles.

**S-RT SERIES ROUGH TERRAIN SCISSOR LIFTS**

Snorkel provides a full range of diesel-powered rough terrain scissor lifts, from compact machines through to twin deck construction scissors. The Snorkel S-RT Series delivers excellent deck space, load capacity and superb terrain capabilities – all of our lifts are equipped with four-wheel drive for rough terrain and they can climb gradients of up to 50%.

Snorkel compact scissor lifts are also available in bi-energy, for the ultimate job site flexibility – work on a building’s exterior, then take the same machine indoors for fitting out. Switching to battery power can also help you comply with increasingly tough laws and regulations on noise and emissions.

|                     | S2770RT   | S3370RT   | S2770BE   | S3370BE   | S3290RT    | S4390RT    | S5290RT    |
|---------------------|-----------|-----------|-----------|-----------|------------|------------|------------|
| max. working height | 33 ft     | 39 ft     | 33 ft     | 39 ft     | 39 ft      | 48 ft      | 58 ft      |
| platform capacity   | 1,250 lbs | 1,000 lbs | 1,250 lbs | 1,000 lbs | 1,500 lbs  | 1,500 lbs  | 1,500 lbs  |
| stowed height       | 8 ft 6 in | 9 ft      | 8 ft 6 in | 9 ft      | 9 ft 2 in  | 9 ft 9 in  | 10 ft 4 in |
| overall length      | 11 ft     | 11 ft     | 11 ft     | 11 ft     | 16 ft      | 16 ft      | 16 ft      |
| overall width       | 6 ft      | 6 ft      | 6 ft      | 6 ft      | 89 in      | 89 in      | 89 in      |
| weight              | 6,172 lbs | 7,980 lbs | 6,834 lbs | 8,642 lbs | 16,534 lbs | 17,196 lbs | 19,180 lbs |

S2770RT  
S3370RT  
S2770BE  
S3370BE  
S3290RT  
S4390RT  
S5290RT





#### SL26SL SPEED LEVEL

The SL26L provides a safe working load of 1,500 lbs and a platform height of 26 ft. The spacious 12 ft x 5 ft 8 in platform comes with a deck extension for additional reach and more compact travel dimensions. With a fast travel speed and 3-mode drive, the SL26SL can cope with the most difficult terrain.



#### SL30SL SPEED LEVEL

The SL30SL provides a platform height of up to 30 ft, on a spacious 5 ft 8 in x 13 ft 11 in, high-grip deck. Driveable at full height, with three drive speeds for added traction, the SL30SL can climb gradients of up to 50% and has lift capacity of 1,300 lbs. The Speed Level system can level the platform in seconds, without the use of stabilizers – delivering excellent productivity benefits over a traditional rough terrain scissor lift.

### SPEED LEVEL SERIES

When other machines can't make the grade, you can rely on the Snorkel Speed Level. This sigma lift offers automatic self-levelling at gradients of up to 50%, without the need for stabilizers or outriggers. Combined with superb ground clearance, excellent lift capacity and powerful 4x4 drive, the Snorkel Speed Level can handle the toughest of job site conditions.

Our patented self-levelling system allows for fast and safe levelling on slopes, delivering 9° front-to-back and 13° side-to-side compound slope levelling capability. Ideal for construction and rough terrain applications, the Snorkel Speed Level is driveable at full height and has a platform capacity of up to 1,500 lbs. The Speed Level can even be driven when elevated on uniform, hard-surfaced slopes such as car park ramps.

|                     | SL26SL     | SL30SL     |
|---------------------|------------|------------|
| max. working height | 32 ft      | 36 ft      |
| platform capacity   | 1,500 lbs  | 1,300 lbs  |
| stowed height       | 8 ft 6 in  | 8 ft 6 in  |
| stowed length       | 12 ft 5 in | 14 ft 5 in |
| width               | 7 ft       | 7 ft       |
| weight              | 7,053 lbs  | 7,495 lbs  |

SL26SL  
SL30SL

SPEED LEVEL SERIES



**MB20J/MB26J**

The ultra-narrow MB-series provides a superb working envelope in very confined interior spaces. Ideal for applications in tight spots which require "up and over" capabilities, such as retail outlets, the MB-series delivers 360° mast rotation, while the articulating jib offers outreach of 8 ft 6 in.



**A38E**

Lightweight but durable and reliable, the A38E offers class-leading performance, with zero emissions. The A38E provides a platform height of up to 37 ft 7 in and up to 18 ft 4 in of outreach. The up-and-over articulated boom design provides the operator with a superb working envelope. Smooth, one-hand proportional joystick control delivers precision in the air, while the slim 4 ft 11 in-wide chassis and 15 in inside turning radius provide excellent maneuverability in confined spaces.



**A46JE**

This 2WD, battery-electric version of the A46 is a versatile boom lift capable of working to heights up to 46 ft. With a working outreach of 24 ft 11 in and a jib length of 5 ft, this self-propelled boom is a highly versatile performer. The spacious 39 in x 72 in platform can lift two people with tools and offers powered 180° rotation. Ideal for use in confined spaces, the A46E has a class-leading inside turning radius of just 23 in.

## ELECTRIC BOOM LIFTS

Snorkel's A-series of market-leading articulating boom lifts combine superb manoeuvrability with clean and quiet operation, providing platform heights of up to 46 ft from zero emission, battery-powered machines.

Designed specifically for warehouse and retail environments, Snorkel MB series of versatile mast boom lifts are perfect for stock picking and for working at height in narrow store aisles, but equally at home in industrial maintenance applications.

|                     | MB20J      | MB26J     | A38E       | A46JE      |
|---------------------|------------|-----------|------------|------------|
| max. working height | 25 ft 8 in | 32 ft     | 43 ft 7 in | 52 ft 3 in |
| platform capacity   | 425 lbs    | 475 lbs   | 475 lbs    | 500 lbs    |
| stowed height       | 6 ft 6 in  | 6 ft 6 in | 6 ft 5 in  | 6 ft 6 in  |
| stowed length       | 7 ft 11 in | 9 ft 2 in | 13 ft 3 in | 18 ft 4 in |
| width               | 31 in      | 39 in     | 4 ft 11 in | 5 ft 8 in  |
| weight              | 6,675 lbs  | 7,000 lbs | 8,822 lbs  | 14,300 lbs |

MB20J  
MB26J  
A38E  
A46JE

ELECTRIC BOOM LIFTS





**A46JRT**

This fast and powerful 4WD rough terrain lift is a leader in its class, delivering a platform height of up to 46 ft and outreach of 24 ft 11 in. Designed for maneuverability in tight spaces, the A46JRT has an inside turning radius of just 32 in - and the boom operates with zero tail swing. The spacious 39 in x 72 in platform can lift two people with tools and the 5 ft jib offers additional flexibility.



**AB60JRT**

The AB60JRT is a robust rough terrain aerial work platform, with superb lift speeds and high maneuverability. The articulating boom provides excellent “up and over” outreach and a platform height of up to 60 ft.



**A80J/A85JRT**

The A80J/A85JRT are the largest models in the articulated boom range, with platform heights of up to 85 ft and outreach of up to 61 ft 11 in. The superb “up and over” reach provides excellent aerial maneuverability. The A85JRT also offers a rotating jib for increased flexibility, plus 4 wheel drive and steer.

### A-SERIES ARTICULATING BOOM LIFTS

Designed for tough job sites, Snorkel's A-series of articulating boom lifts combine superb manoeuvrability with power and precision, delivering working heights of up to 85 ft and lift capacity for two people plus tools.

Our class-leading articulated boom lifts provide the ultimate working envelope, including superb “up and over” capabilities and powerful rough terrain drive. Snorkel's smooth, proportional operating system gives you precise control where you need it most. Articulating jibs for extra manoeuvrability are fitted as standard.

|                     | A46JRT      | AB60JRT    | A80J        | A85JRT     |
|---------------------|-------------|------------|-------------|------------|
| max. working height | 52 ft 11 in | 66 ft      | 85 ft 11 in | 90 ft 6 in |
| platform capacity   | 500 lbs     | 500 lbs    | 500 lbs     | 500 lbs    |
| stowed height       | 7 ft 2 in   | 8 ft 3 in  | 9 ft 10 in  | 9 ft 10 in |
| stowed length       | 18 ft 4 in  | 29 ft 2 in | 32 ft 2 in  | 41 ft 2 in |
| width               | 6 ft 10 in  | 7 ft 11 in | 8 ft 6 in   | 8 ft 6 in  |
| weight              | 14,600 lbs  | 24,800 lbs | 36,800 lbs  | 38,580 lbs |

A46JRT  
AB60JRT  
A80J  
A85JRT

ARTICULATING BOOM LIFTS



**T40RT/T46JRT**

The Snorkel T40RT delivers a platform height of up to 40 ft and outreach of 33 ft. For additional flexibility, we offer the T46RT, the same machine with an added 6 ft jib. The T46JRT delivers a platform height of up to 46 ft and outreach of 40 ft. Designed for construction sites, the T46JRT has fast drive speed front and rear oscillating axles, four wheel hydrostatic drive and ground clearance of 14 in.



**TB60RT/TB65J**

The Snorkel TB60RT provides a platform height of 60 ft and 50 ft of outreach. Designed for construction sites, the TB60RT has front and rear oscillating axles, four wheel drive and excellent ground clearance, while the spacious platform cage can be entered from three sides. For additional flexibility, we offer the TB65J, the same machine with a 5 ft jib, delivering a platform height of 65 ft and outreach of up to 56 ft



**T80/T85J**

The Snorkel T80 delivers a platform height of 80 ft and outreach of 71 ft 2 in. Engineered for construction sites, four wheel drive and four wheel steer come as standard. For additional flexibility, we offer the T85J, the same machine with a 5 ft jib, providing a platform height of 85 ft and outreach of 76 ft 9 in.

**T-SERIES TELESCOPIC BOOM LIFTS**

Snorkel’s T-series telescopic boom lifts are designed for tough job sites and are built to last. Four wheel drive, powerful diesel engines and high torque drive motors combine to deliver superior performance. We engineer simplicity, delivering robust aerial lifts that are easy to operate and easy to maintain or service. Our dedication to safety, quality and operator comfort make Snorkel booms dependable performers in construction and industrial applications.

All are available as either a straight stick boom or with a jib for additional flexibility. Other features and options include power and air to platform, sand blast protection kit, cold weather start kit, platform lights and hydraulic generator, ensuring there is a Snorkel T-Series machine for any job site.

|                     | T40RT       | T46JRT     | TB60RT      | TB65J      | T80        | T85J        | T120       | T125J      |
|---------------------|-------------|------------|-------------|------------|------------|-------------|------------|------------|
| max. working height | 46 ft       | 52 ft      | 66 ft       | 71 ft      | 86 ft      | 90 ft 11 in | 126 ft     | 131 ft     |
| platform capacity   | 600 lbs     | 500 lbs    | 500 lbs     | 500 lbs    | 500 lbs    | 500 lbs     | 500 lbs    | 600 lbs    |
| stowed height       | 7 ft 11 in  | 7 ft 11 in | 8 ft 10 in  | 8 ft 10 in | 9 ft 6 in  | 9 ft 6 in   | 9 ft 10 in | 10 ft 5 in |
| stowed length       | 24 ft 10 in | 28 ft 5 in | 30 ft 10 in | 32 ft 9 in | 38 ft 8 in | 42 ft 3 in  | 42 ft 3 in | 44 ft 9 in |
| width               | 8 ft        | 8 ft       | 8 ft 2 in   | 8 ft 2 in  | 8 ft 6 in  | 8 ft 6 in   | 12 ft 9 in | 12 ft 9 in |
| weight              | 14,299 lbs  | 14,500 lbs | 21,731 lbs  | 26,270 lbs | 36,332 lbs | 37,699 lbs  | 39,500 lbs | 41,887 lbs |

- T40RT
- T46JRT
- TB60RT
- TB65J
- T80
- T85J
- T120
- T125J



#### **T120/T125J**

The Snorkel T120 provides a platform height of 120 ft and outreach of 62 ft. Engineered for construction sites, four wheel drive and four wheel steer come as standard, along with a fixed front axle and extendable rear axle. For additional flexibility, we offer the T125J, the same machine with a 5 ft jib, providing a platform height of 125 ft and outreach of 62 ft 11 in.

T40RT  
T46JRT  
TB60RT  
TB65J  
T80  
T85J  
T120  
T125J

TELESCOPIC BOOM LIFTS





**TL34**  
The TL34 is an affordable and easy to use towable boom, providing a platform height of up to 33 ft 5 in and 16 ft 4 in of outreach. The standard, fold-down manual outriggers have a footprint of just 11 ft 9 in x 11 ft 9 in and the entire machine weighs only 2,866 lbs. The fully proportional hydraulic controls, powered by a 12v battery pack, are responsive and smooth, while also ensuring the TL34 is simple and cost-effective to maintain. Optional extras include hydraulic stabilizers.



**TL37J**  
The TL37J is a high specification towable lift that is excellent value for money. The articulating boom provides a platform height of 36 ft 8 in and up to 19 ft 4 in of outreach. A 4 ft 3 in jib with 130° working arc and powered platform rotation provides additional maneuverability. Fully proportional live hydraulic controls ensure the TL37J is both simple to use and easy to service or maintain. Hydraulic stabilizers are fitted as standard and a range of power options are available.



**TL39**  
The TL39 is a tough yet compact articulating/telescopic trailer boom and offers a platform height of up to 38 ft 9 in and 20 ft 11 in of outreach. Weighing just 3,263 lbs, this lift has a compact towing length of just 16 ft. Hydraulic stabilizers are standard, with the option of auto-levelling.



**TL49J**  
This 49 ft towable lift's articulating/telescopic boom and 140° jib offer a superb working envelope, providing class-leading outreach of 29 ft 10 in. Live hydraulic controls and heavy duty booms ensure the TL49J is a robust machine that is simple to operate, maintain and repair. A range of power options are available, including bi-energy.

### TL-SERIES TOWABLE BOOM LIFTS

The Snorkel TL-series are high specification, rugged, reliable towable boom lifts that are very cost-competitive. The machines are easy and low cost to maintain, while simple to operate. Towable with most cars and light commercial vehicles, these are entry-level machines that deliver a great return on investment.

Most TL-series lifts are available in a range of power options including gasoline, diesel, electric and bi-energy. Customize your work station with air to platform, a 230V generator and platform work lights.

|                     | TL34              | TL37J      | TL39       | TL49J      |
|---------------------|-------------------|------------|------------|------------|
| max. working height | 39 ft 5 in        | 42 ft 8 in | 44 ft 9 in | 55 ft 2 in |
| platform capacity   | 475 lbs           | 475 lbs    | 475 lbs    | 450 lbs    |
| stowed height       | 7 ft 2 in         | 6 ft 4 in  | 7 ft 3 in  | 6 ft 10 in |
| towing length       | 17 ft 20 ft 11 in | 16 ft 1 in | 23 ft 3 in |            |
| towing width        | 4 ft 11 in        | 4 ft 10 in | 5 ft 3 in  | 5 ft 8 in  |
| weight              | 2,866 lbs         | 3,196 lbs  | 3,263 lbs  | 4,960 lbs  |